



GB737

Bluetooth GPS Receiver User manual

Version 1.0





Tel: +886-2-8751-8598
Email: service@cpss.com.tw

Fax: +886-2-8797-3898
Web: <http://www.cpss.com.tw>

No part of this User's Manual may be reproduced or transmitted in any form or by any means, electronic or mechanical, including photocopying recording ,for any purpose other than the purchaser's personal use, without the written permission of Compass Systems Corp.

Information in this User's Manual is subject to change without notice. Compass Systems Corp. reserves the right to change or improve or modify its products and to make changes to the content without obligation to notify any person or organization of such changes.

©Copy right 2007 by Compass Systems Corp. All rights reserved.

Printed in Taiwan

WARNINGS

Some certain knowledge is required to be well known by the user for proper and safe use of Navibe Bluetooth GPS receiver. Please read this User's Manual first before operation.

Because Navibe Bluetooth GPS receiver is an assistant device, it will NOT undertake any legal responsibility for any accident or damage caused by the user's wrong operation and/or wrong judgement in navigating with Navibe.

CAUTION

The Global Positioning System(GPS) is a system of 24 satellites which circle the earth twice a day in a very precise orbit and transmit information to earth. The Navibe unit must continuously find at least three of these satellites to calculate your position and your movement.

This GPS system is operated by the government of the United States, which is solely responsible for its accuracy and maintenance. Any changes of the system could affect the accuracy and performance of all GPS equipment.



PLEASE CHARGE BATTERY FULLY BEFORE INITIAL USE.

(When fully charged, red-color battery LED will automatically switch off.)

Thank you for choosing Navibe Bluetooth GPS Receiver!

Take it now -----it can be your best friend!

Application Conditions:

Navibe is designed for outdoors navigation in the temperature range of -20°C ~ 60°C . Because of the built-in battery, please don't heat or leave the receiver in high temperature environment or direct sunshine for a long period of time.

Introduction section gives you a general overview of Navibe features.

Reference section tells how to operate the unit correctly and how to connect this unit to your pocket PC step-by-step.

If you find something missing or damaged with the reference to the standard package, please contact the local dealer or retailer.

Chapter I Introduction

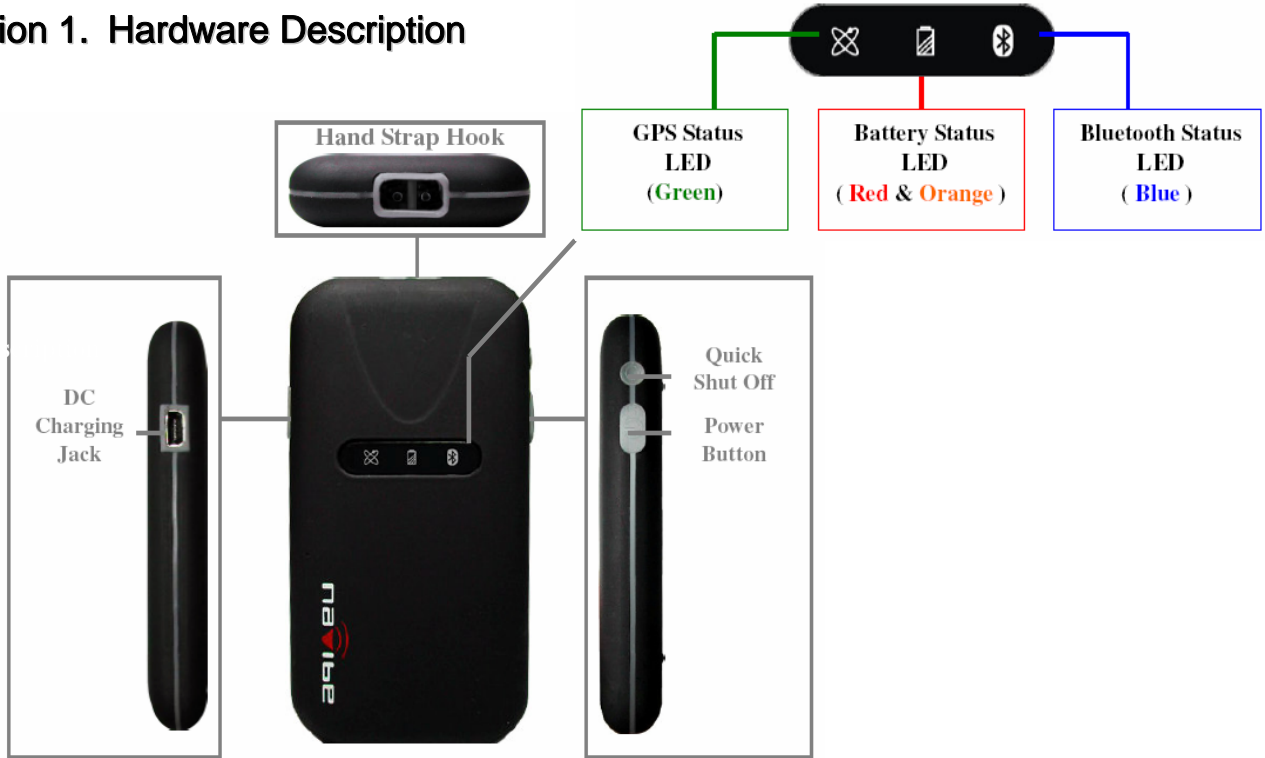
Section 1	Announcement	i
Section 2	Warnings	ii
Section 3	Caution	iii
Section 4	Welcome to Navibe	iv
Section 5	Table of Contents	v

Chapter II Reference

Section 1	Hardware Description	1
Section 2	State Table of LED	2
Section 3	Operation	3-4
Section 4	Packet PC Setup	5-9
Section 5	Pair GB737 to your Packet PC	10-14
Appendix	FCC statement	


Reference

Section 1. Hardware Description




Section 2. State Table of LED


GPS Status LED (Green)

	Description
Green ON	Looking for Satellites
Green Flashing	Satellites lucked


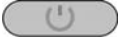

Battery Status LED (Red and Orange)

	Description
Red ON	Low Power
Orange ON	Charging
LED OFF	Battery Charged





Bluetooth Status LED (Blue)

	Description
Blue Flashing	Bluetooth Connected
Blue ON	Wait for Bluetooth pairing

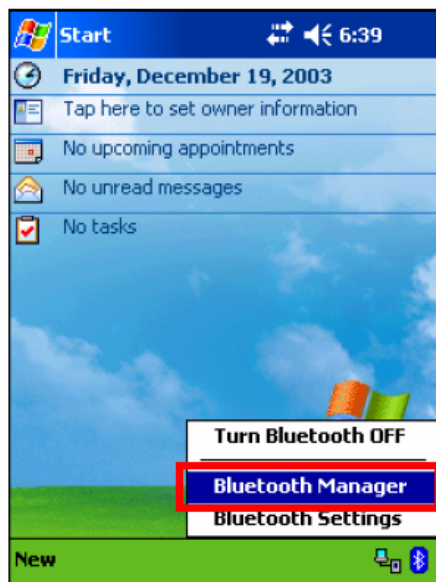
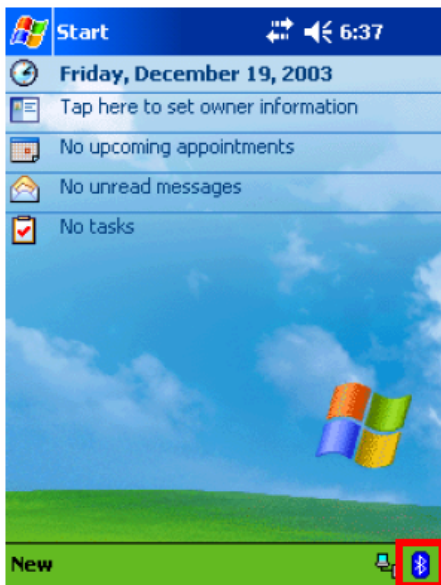
Section 3. Operation -1

<p>Turn on</p> 	<p>To turn on the receiver, press the power buttons on side for a few seconds until the GREEN GPS LED & BLUE Bluetooth LED indicators switch on.</p>
<p>Turn off</p> 	<p>1) To turn off the receiver, press the power switch on side for a few seconds until BLUE Bluetooth LED indicators switch off.</p>
	<p>2) Auto power-off if Bluetooth is not connected to and host devices within 10 minutes for power-saving.</p>
<p>Satellite Status</p> 	<p>The receiver will look for satellites automatically once power on and indicate the status by LED status.</p>

Section 3. Operation -2

<p>Bluetooth Device</p> 	<p>You may start to pair the receiver to a Bluetooth device when the LED indicator steady ON. When successfully connected to a Bluetooth device, the Bluetooth indicator will flash regularly.</p> <p> Make sure your Pocket PCs are ready for Bluetooth connections before device pairing.</p>
<p>Low Power Charging</p> 	<p>When the power becomes low, the mini-USB power jack allows you to connect the device to a power source to recharge the internal battery. When fully charged, the indicator will auto switch off.</p>
<p>Quick Shut Off</p> 	<p>To shut off the system rapidly when it responds slowly.</p>

Section 4. Pocket PC Setup



5

1. Tap the “**Bluetooth**” icon on screen.

2. Select “**Bluetooth Manager**”

Section 4. Pocket PC Setup



Note: Make sure BT receiver is in pairing mode before connecting to your Pocket PC.



3. Tap the “New” & “Connect!” in My Shortcuts screen.

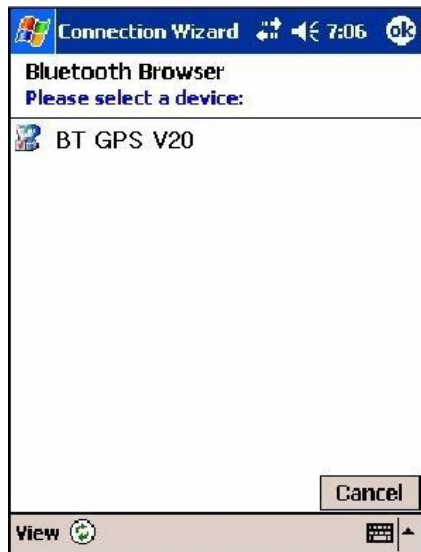


4. Select “Explore a Bluetooth device” & tap “Next” in Connection Wizard screen

Section 4. Pocket PC Setup



5. Follow the instruction or await for a while.



6. Tap “BT GPS V20” to continue.

Section 4. Pocket PC Setup

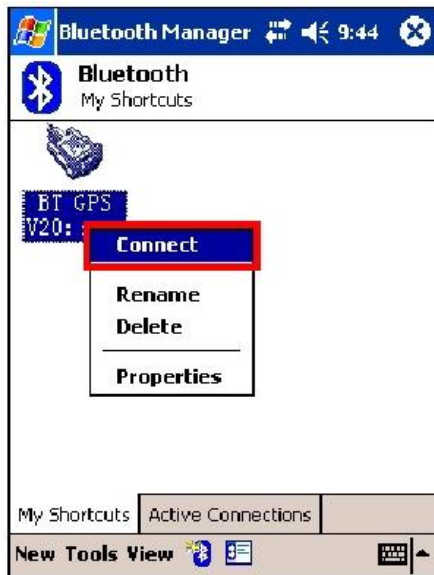


7. Select “SPP” service and tap “Next”.

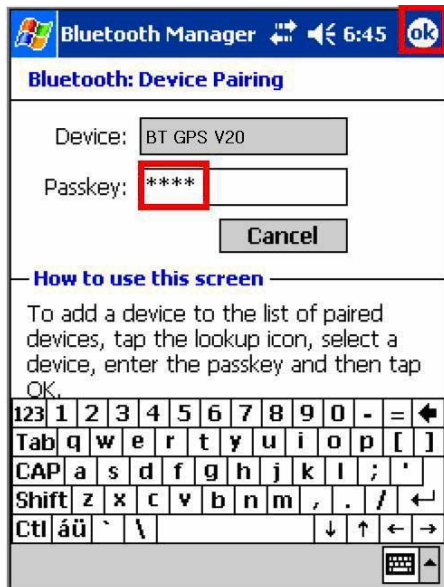


8. Tap “Finish” to close this program.

Section 4. Pocket PC Setup



9. Tap “Connect” to activate the connection in My Shortcuts screen.

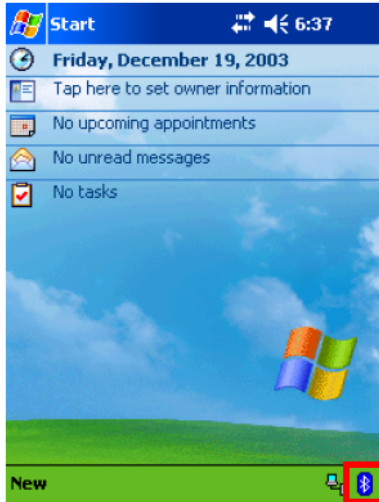


10. Key in the Passkey “0000” then tap “OK”

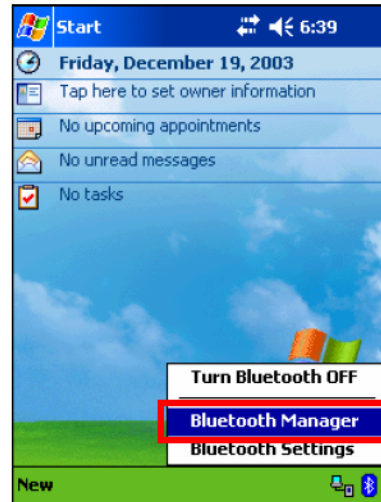
Section 5. Pair GB737 to your Pocket PC



Note: Make sure your Pocket PC Bluetooth connection is ON before device pairing.

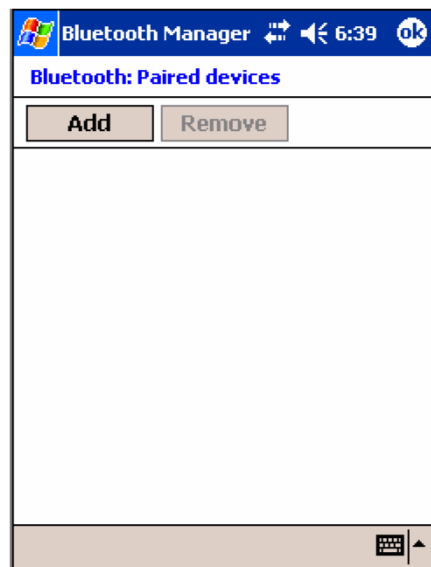
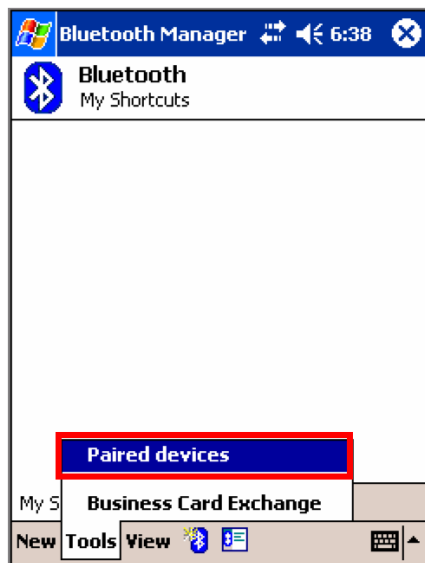


1. Tap the **“Bluetooth”** icon on main screen.



2. Select **“Bluetooth Manager”**

Section 5. Pair GB737 to your Pocket PC

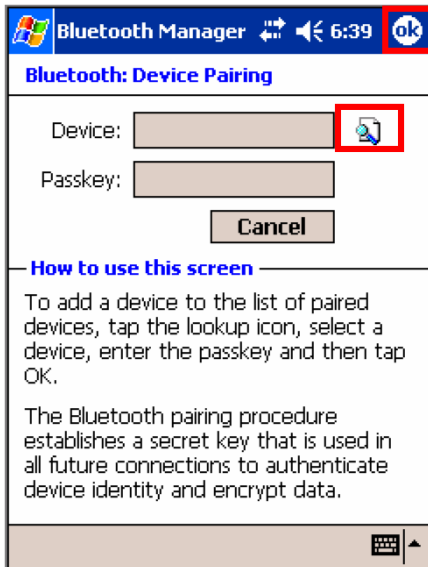



11

3. Tap **“Tools”** then select **“Paired devices”** in My Shortcuts screen.

4. Tap **“Add”**

Section 5. Pair GB737 to your Pocket PC



3. Tap  icon to look up Bluetooth devices.

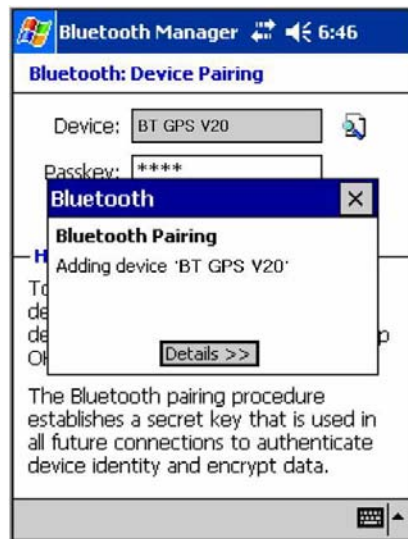


4. Tap the device ID name “**BT GPS V20**” to continue.

Section 5. Pair GB737 to your Pocket PC

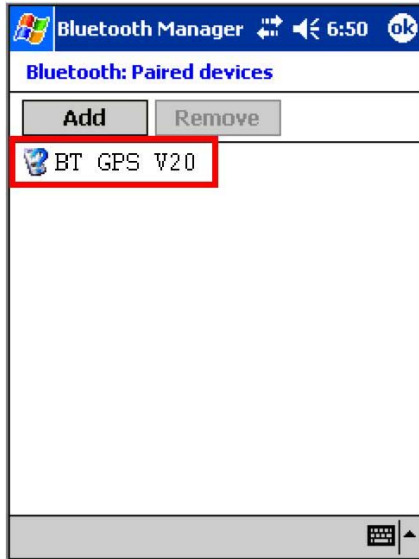


5. Key in the passkey “0000” to start pairing.



6. Adding BT GPS V20 to device list.

Section 5. Pair GB737 to your Pocket PC



7. You may find the BT GPS V20 in the Paired devices screen.

Federal Communications Commission (FCC) Statement

15.21

You are cautioned that changes or modifications not expressly approved by the part responsible for compliance could void the user's authority to operate the equipment.

15.105(b)

This equipment has been tested and found to comply with the limits for a Class B digital device, pursuant to part 15 of the FCC rules. These limits are designed to provide reasonable protection against harmful interference in a residential installation. This equipment generates, uses and can radiate radio frequency energy and, if not installed and used in accordance with the instructions, may cause harmful interference to radio communications. However, there is no guarantee that interference will not occur in a particular installation. If this equipment does cause harmful interference to radio or television reception, which can be determined by turning the equipment off and on, the user is encouraged to try to correct the interference by one or more of the following measures:

- Reorient or relocate the receiving antenna.
- Increase the separation between the equipment and receiver.
- Connect the equipment into an outlet on a circuit different from that to which the receiver is connected.
- Consult the dealer or an experienced radio/TV technician for help.

Operation is subject to the following two conditions:

- 1) this device may not cause interference and
- 2) this device must accept any interference, including interference that may cause undesired operation of the device.

FCC RF Radiation Exposure Statement:

This equipment complies with FCC radiation exposure limits set forth for an uncontrolled environment. End users must follow the specific operating instructions for satisfying RF exposure compliance. This transmitter must not be co-located or operating in conjunction with any other antenna or transmitter.

Compass Systems Corp. Tel: +886-2-8751-8598 Fax: +886-2-8797-3898 Email: service@cpss.com.tw <http://www.cpss.com.tw>

©Copy right 2007 by Compass Systems Corp. All rights reserved. Printed in Taiwan